

© 2024 RPS Group
 Notes
 1. This drawing has been prepared in accordance with the scope of RPS's appointment with its client and is subject to the terms and conditions of that appointment. RPS accepts no liability for any use of this document other than by its client and only for the purposes for which it was prepared and provided.
 2. If received electronically it is the recipient's responsibility to print to correct scale. Only written dimensions should be used.

- Legend**
- Order Limits
 - Elmtion 1 association (343a)
 - Elmtion 3 association (343c)
 - Aberford association (511a)

Rev	Description	By	CB	Date

PHOTOVOLT
DEVELOPMENT PARTNERS

RPS
A TETRA TECH COMPANY

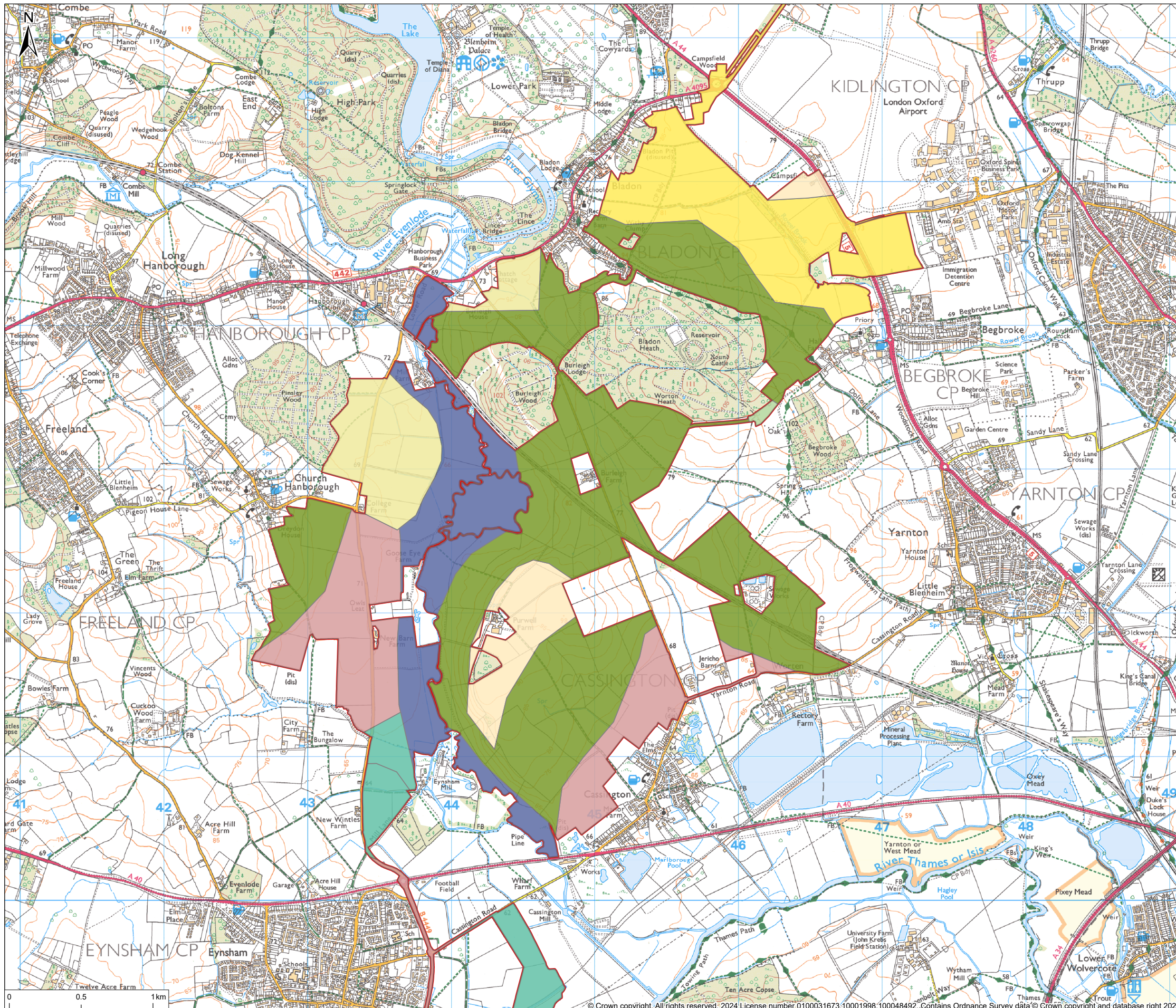
Client PVDP
 Project Botley West Solar Farm
 Title Distribution of soil associations
 Status **FINAL**
 Drawing Number EN010147/APP/6.4
 Figure Number **17.6**

Drawn By JM
 Scale @ A3 1:25,000

PM/Checked By JT
 Date Created NOV 2024
 Rev -

rpsgroup.com
 20 Western Avenue, Milton Park, Abingdon, Oxfordshire, OX14 4SH
 T: +44(0)1235 821 888 E: rps@rpsgroup.com

P:\eur-mpfs-02.eur.rpsgroup.com\Projects\12426 Proposed DCO Scale Solar Development 860mw\Tech\Drawings\12426-02-19-03.aprx



© 2024 RPS Group
 Notes
 1. This drawing has been prepared in accordance with the scope of RPS's appointment with its client and is subject to the terms and conditions of that appointment. RPS accepts no liability for any use of this document other than by its client and only for the purposes for which it was prepared and provided.
 2. If received electronically it is the recipient's responsibility to print to correct scale. Only written dimensions should be used.

- Legend**
- Order Limits
 - Elmtion 1 association (343a)
 - Elmtion 3 association (343c)
 - Badsey 1 association (511h)
 - Sutton 1 association (571u)
 - Denchworth association (712b)
 - Essendon association (714d)
 - Fladbury 1 association (813b)
 - Kelmscot association (832)

Rev	Description	By	CB	Date



PHOTOVOLT
DEVELOPMENT PARTNERS

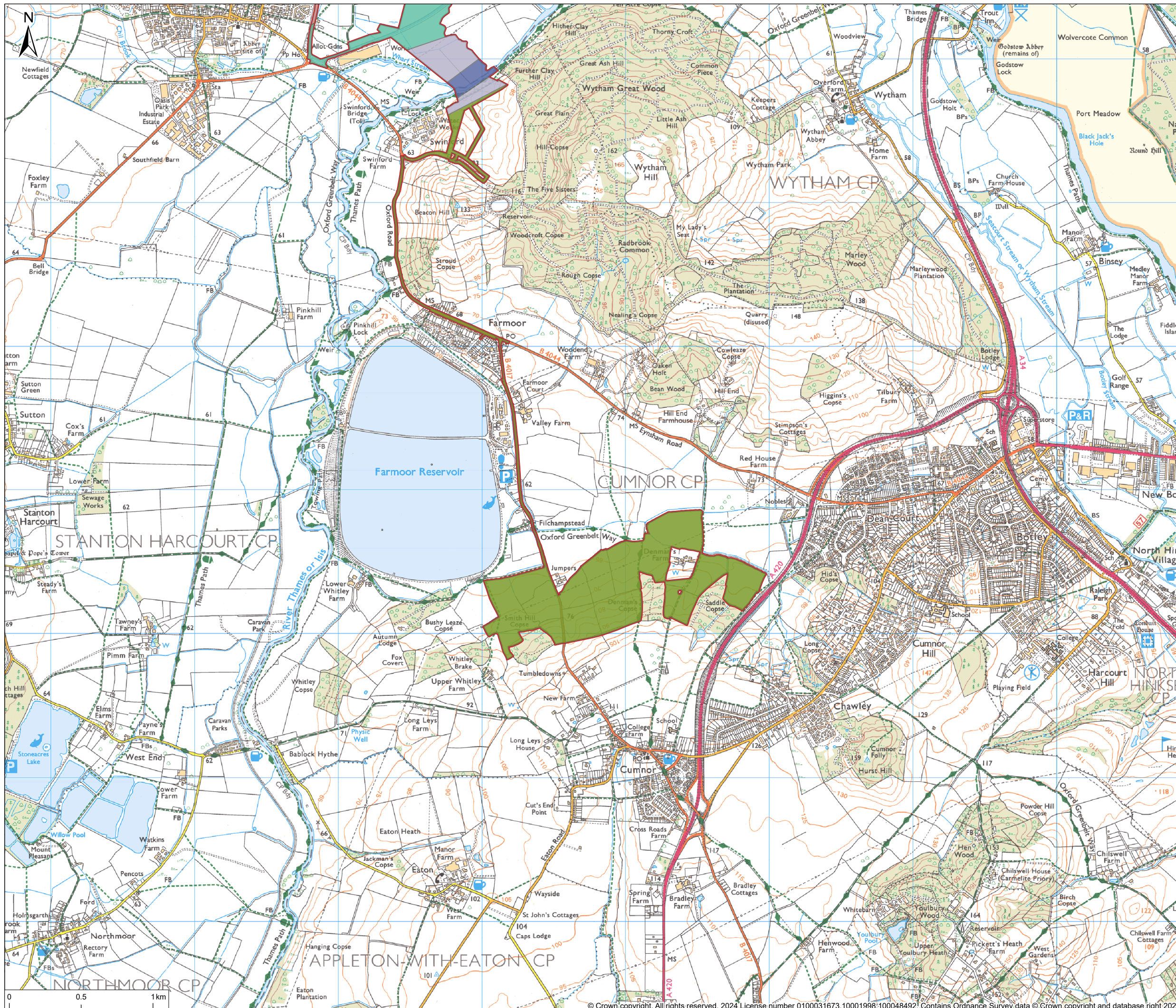


RPS
A TETRA TECH COMPANY

Client PVDP
 Project Botley West Solar Farm
 Title Distribution of soil associations
 Status **FINAL** Drawn By JM PM/Checked By JT
 Drawing Number EN010147/APP/6.4 Scale @ A3 1:25,000 Date Created NOV 2024
 Figure Number **17.6** Rev -

rpsgroup.com
 20 Western Avenue, Milton Park, Abingdon, Oxfordshire, OX14 4SH
 T: +44(0)1235 821 888 E: rps@rpsgroup.com

P:\eur-mpfs-02.eur.rpsgroup.com\Projects\12426 Proposed DCO Scale Solar Development 860mwi\Tech\Drawings\12426-02-19-03.aprx



© 2024 RPS Group
 Notes
 1. This drawing has been prepared in accordance with the scope of RPS's appointment with its client and is subject to the terms and conditions of that appointment. RPS accepts no liability for any use of this document other than by its client and only for the purposes for which it was prepared and provided.
 2. If received electronically it is the recipient's responsibility to print to correct scale. Only written dimensions should be used.

- Legend**
- Order Limits
 - Badsey 1 association (511h)
 - Denchworth association (712b)
 - Fladbury 1 association (813b)
 - Kelmscot association (832)
 - Thames association (814a)

Rev	Description	By	CB	Date

PHOTOVOLT
DEVELOPMENT PARTNERS

A TETRA TECH COMPANY

Client PVDP
 Project Botley West Solar Farm
 Title Distribution of soil associations
 Status **FINAL** Drawn By JM PM/Checked By JT
 Drawing Number EN010147/APP/6.4 Scale @ A3 1:25,000 Date Created NOV 2024
 Figure Number 17.6 Rev -

rpsgroup.com
 20 Western Avenue, Milton Park, Abingdon, Oxfordshire, OX14 4SH
 T: +44(0)1235 821 888 E: rps@rpsgroup.com

P:\rps\mfs-02.eur.rpsgroup.com\Projects\12426 Proposed DCO Scale Solar Development 860mwi\TechDrawings\12426-02-19-03.aprx